

THE
Camellia
REVIEW

A Publication of the Southern California Camellia Society



C. reticulata 'Nuccio's Ruby Variegated'

Southern California Camellia Society, Inc.

An organization devoted to the advancement of the camellia for the benefit of mankind—
physically, mentally and inspirationally.

OFFICERS —2005-2006

BRADFORD KING, President
BOBBIE BELCHER, Secretary, Treasurer, Membership Chairman
DAVID TRUJILLO, Vice President
BETH STONE, Foreign Membership

DIRECTORS

MELVIN BELCHER 40641 Via Amapola Murrieta 92562 (951) 304-2507	DAVID MacLAREN 1151 Oxford Road, San Marino 91108 (818)405-2186
SERGIO BRACCI 5567 N. Burton Ave., San Gabriel 91776 (626) 286-4338	DOUG NOWLIN 1351 Bullard Lane, Tustin 92780 (714) 838-1890
JOANN BREWER 4166 La Junta, Claremont 91711 (909) 593-3442	LUCIA MARINO PIERPOINT 2271 E. California Blvd., San Marino 91108 (626) 393-0869
JULIUS CHRISTINSON 3751 Hoover St., Riverside 92504 (909) 688-1547	BETH STONE 1997 Queensberry Rd., Pasadena 91104 (626) 798-4993
ANN FRAGGOS 1524 N. Lowell Ave., Claremont 91711 (909) 399-9480	LINDA TROYER 3930 Northampton, Claremont 91711 (909) 395-8407
MARILEE GRAY 868 Kent Dr., Claremont 91711 (909) 624-4107	DAVID TRUJILLO 13265 Catalpa, Etiwanda 91739 (909) 899-1650
BRADFORD KING 1530 Marendale Lane, Arcadia 91006 (626)445-8730	WAYNE WALKER 1418 Descanso Drive, LaCanada 91011 (818) 790-7413
AL LATHAM 655 Prospect Crescent, Pasadena 91103 (626) 744-9445	

HONORARY LIFE MEMBERS

MEL & BOBBIE BELCHER	JULIUS NUCCIO
SERGIO BRACCI	GRADY PERIGAN
MARILEE GRAY	BERNICE GUNN THOMPSON

FOREIGN REPRESENTATIVES

DENISE DiSALVIA 61 Twynam Street Narrandera NSW 2700 AUSTRALIA badenis@inet.net.au	BERNIE STEVENSON 95 Gleneagles Drive R. D. 2 Katikati NEW ZEALAND bstevenson@xtra.co.nz
--	---

THE CAMELLIA REVIEW

Mel Belcher, Editor

Published by the Southern California Camellia Society, Inc. Copyright 2006
Three issues per volume.

Send correspondence and manuscripts directly to the Editor.
Republication is permitted if credit is given to *The Camellia Review* and to the author

CHANGE OF ADDRESS—Please notify the Secretary at once.

TABLE OF CONTENTS

Vol. 67

March-June, 2006

No. 3

Camellia Care May Through August, Ray Bond	3
Gibberelin—A Real Problem, David L. Feathers	8
Bob Ehrhart Speaks to Combined Meeting	10
Creating a New Camellia Garden, Bradford King	12
It's An Ill Wind That Blows No Man Good, Bradford King	13
Show Results	
Pacific Camellia Society	14
Orange County Camellia Society	16
Southern California Camellia Society, Descanso	18
San Diego Camellia Society	21
Pomona Valley Camellia Society	22
Southern California Camellia Society, Huntington	25
Southern California Camellia Council	27
Camellia Society of Kern County	29
Pacific Camellia Society "Mini Show"	30
Index of Articles and Authors, Volume 67	31

COVER PHOTO

C. reticulata 'Nuccio's Ruby Variegated'
Very dark rich red. Large to very large,
semidouble with irregular, ruffled petals. Average, compact,
upright growth. (Reticulata seedling, Nuccio's 1974)
Photo by Mel Belcher

AN INVITATION TO JOIN THE SOUTHERN CALIFORNIA CAMELLIA SOCIETY

The Southern California Camellia Society will welcome you as a member.

Annual membership — \$25.00 Includes subscription to *The Camellia Review* (three issues per year).

New Member	\$25.00	Sponsoring Member	\$50.00
Regular Member	\$25.00	Sustaining Member	\$100.00
Patron Member		\$150.00	

Send check payable to Southern California Camellia Society
40641 Via Amapola
Murrieta, CA 92562

•••••

2006 Camellia Nomenclature with over 190 pages describing more than 4,000 varieties is available **NOW** at a cost of \$12 per copy. Copies can be ordered by sending a check payable to

Southern California Camellia Society
c/o Bobbie Belcher,
40641 Via Amapola, Murrieta, CA 92562.

THOUGHTS

I wonder why each year about February, March and April we always utter some words about how different the camellia season has been this year compared to our own pre-conceived "norm." Let me utter some observations based on my garden. Why did the Elegans family (Champagne, Splendor and Supreme,) not produce a decent bloom? A notable exception was 'Shiro Chan'. A lot of "bull nosed" buds but few blooms.

Why were my favorite large japonicas, 'Katie Variegated', 'Grand Prix', Tomorrow Park Hill' and others less than spectacular. Even my 'Elizabeth Dowd Silver' did not receive its normal public adulation. Why have 'Nuccio's Ruby Variegated', 'Cornelian' and 'May Westbrook' been sleepers for fifteen years and suddenly awakened with a shout this year. Why have many varieties of japonicas bloomed a month early or a month late this year? These questions added to multiple others could cause one to conclude that we don't really have a "norm" or, if we must have one, it must be nebulously broad and flexible.

As hobbyists we have considerable control of the "Twelve Steps to the Head Table," but we don't have much control over climatic conditions. Mark Twain said it well when he said that everyone talks about the weather but no one does anything about it. Temperature is certainly a dominant factor prompting bloom response. The timing, frequency and quantity of rain are very important. I'm sure we have all been amazed at how large blooms can be following a rain. Moisture or humidity appears to contribute to the bud opening process. At least I think humidity has a mitigating effect against "bull nosing." Incidentally, I'm considering installing misters in my show garden and hope this action will promote bud opening for those beautiful Elegans.

If we took time to record weather conditions for a ten-year period but don't have corresponding bloom response to overlay on the climatic timeline, we don't have very much. Since we don't have these date points, I'll be happy to rest on the assurance that there is a time and place for everything, including camellias.

In August we plan to attend the ICS Congress in Melbourne, Australia, and a Post Congress Tour through parts of New Zealand. We'll check with our camellia friends "down under" about pre-conceived "norms."

—Mel Belcher, Editor



WELCOME NEW MEMBERS

Gene and Elynor Baughman
4909 Gould Avenue
La Canada, CA 91011
818/790-1648

Milton Brown
935 Chester Avenue
San Marino, CA 91108-1323

Stephen and Anne Dashiell
1005 N. Hill Avenue
Pasadena, CA 91104-3045
626/794-9942

Sharon Lee
305 San Lucas Drive
Solana Beach, CA 92075

Steve and Nancy Mefford
6051 Stanford Avenue
Garden Grove, CA 92845
714/799-9470

John O'Neill
4094 Center Avenue
Norco, CA 92860
951-737-5870

Christy Walters
365 Hot Springs Road
Montecito, CA 93108
805/969-1278

CAMELLIA CARE MAY THOUGH AUGUST

Ray Bond
Dallas, Texas

May and June

Disease Control: Continue to inspect for camellia dieback, a fungal disease caused by the wind/moisture borne fungus, *glomerella cingulata*. Remove any branches or twigs that look dried up and dead. A spray of captan or Manzate™ or Dithane™ and Cleary 3336™, 50/50, two pound each per 100 gallons of water, every three to four weeks and more often if you believe it is necessary, is recommended during May and June in the more humid areas. Be sure to add a drop or two per gallon of dishwasher or liquid laundry detergent to your spray as a surfactant. Generally, *C. sasanqua* is more susceptible to camellia dieback than *C. japonica*.

If you find "fat leaves," or leaves that look and feel fat and spongy, remove them from the plant and destroy them. Do not compost. This is a fungus disease known as leaf gall. Mostly, it affects *C. sasanquas*, but it will attack a few *C. japonicas*. Try to prevent infected "fat" leaves from falling to the ground where the disease will reproduce and the life cycle will be repeated. If these fat leaves do fall, pick them up as soon as you can.

Leaf gall is not fatal to the plant unless it is allowed to go on for a long time. If leaves are cleaned up and the reproductive cycle is broken, it will be no problem. It can become an unsightly nuisance if allowed to spread and expand.

Insect Control: Continue to keep an eye out for aphids and get rid of them as they are detected. You will usually see them as a mass of black or deep green specs on new growth and on some spring blooms. Later in the year, they can appear on buds. Aphids can ruin new growth quickly. New spring growth is where your blooms will come from next fall.

Good antidotes for aphids are sprays of Insecticidal Soap™, kitchen detergent mixed with water

(dishwater strength), and many commercially recommended sprays. Insecticidal Soap™ is a bit stronger than what you might brew up in the kitchen. I keep a spray jar of Orthene™ (no more than 50%) or isopropyl alcohol (IPA) from the medicine cabinet handy and whenever I see aphids on my plants, I zap them. Sunspray™, a good aphid deterrent, is quite good for ants and they do not build immunity to it. Getting rid of ants will help; ants encourage aphids. Any time you see ants on any of your plants, inspect for aphids.

Fire ants love the loose, moist soil of camellia containers and will use the containers for their home. Kill them as soon as possible or the plants will be killed as the ants eat the roots. Orthene™ (50) is very good for fire ant eradication; it is a quick kill and renders the soil unusable to more fire ants. In early May, there are several stomach poisons, such as Amdro, can be broadcast in fire ant infested areas. These poisons are taken into the colonies and food and the entire colony is wiped out. Several State Universities are working on fire ant eradication techniques including beneficial insects and nematodes. The most promising is a tiny wasp that attacks the ant and eats its head.

Mealy bugs, which are in the scale family, will be coming into season as will white flies. These are sucking insects that can do a lot of damage, if the plants become heavily infested with them. The treatment for aphids will usually kill mealy bugs. Strong, healthy plants will discourage these vermin.

A good insecticide for mealy bugs is isopropyl alcohol (IBA) from your local drug store. Put it in a spray bottle and when you see them, let them have it. IBA will not harm plants when sprayed as a mist. It will zap the above bugs, plus a few other pests. It has no

residual effect.

As usual, white flies can be a different matter. However, they do not seem to like camellias very much. Use insecticides which are recommended for white flies, rotating chemicals to lessen the likelihood of the white flies building resistance to treatment. Be sure any insecticides you use are compatible with camellias. Never use Dursban™ (chlorpyrifos) on camellias. It is not recommended for camellias and can quickly damage them. Chlorpyrifos is being withdrawn from the market.

Mites can be a problem, particularly if the plants are weak or neglected. Sunspray™, applied per directions, is a good deterrent as is Avid™ used at about 75% of directed strength. If you use Avid™ be sure that the water base for any mite spray is buffered to a pH of about 6.

Another somewhat minor threat to camellias is thrips (thysanoptera). They suck plant sap from the surface of the leaves and can chew up blooms from the inside. Symptoms are the gradual "graying" of leaves and buds that fall off the plant for no obvious reason. Close inspection of the leaves reveals many minute areas of gray interspersed with chlorophyll in the leaf surface. The leaf is dull, not having its healthy camellia luster. In or near the blooming season, thrips will attack the buds from within, chewing petals off at the base. Tear the bloom open and you can see almost microscopic, gray, whisker like things (thrips) in the base bud or young flower. A mixture of Orthene 50™ and Tame™, applied when thrips are discovered, will control them.

Continue to inspect for scale. If you see evidence of scale, treat as previously recommended. Camellias are a second level preferred host for several kinds of scale.

Environment: Check the soil around your camellia plants for pH. Camellias like a slightly acid soil, but contrary to popular belief, not as much so as azaleas. A pH between 5.5

to 6.5 is optimum. Much above or below this range, the plants cannot absorb nutrients completely and will not thrive as happily. If the pH is too low, add dolomitic limestone. If too high, add iron sulfate. Good pH test kits are available and the procedure is very simple. I prefer them to the electronic pH meters that, in my experience, have been unreliable and expensive. However, over the past few years, they have improved.

As important as pH, if not more so, is the texture of the soil mix around your camellia roots. It should be well drained and porous as explained in last month's chapter. Camellia roots need air. If you have your plants in containers, I suggest a few pine bark "nuggets" in the bottom of the container. The roots will love it and it will give them the air they need. Camellias can stand a pH range that is not completely friendly, particularly if a bit on the high side, much better than they can tolerate wet and/or tight soil. It is a general consensus that good drainage is more important to camellias than exact pH.

Should you detect or see a brown growth on the bottom edges of the leaves, maybe combined with some yellowing around the edges, this probably indicates too much water. The plant is trying to tell you that it is unhappy due to too much water in its system. Check for drainage problems and perhaps too much water being applied to the plant. It might also have "wet feet." Check for the plant being too deep in the ground or container.

There is a tendency to plant camellias too deeply. Be sure the crown of the plant is about an inch above the level of the surrounding soil. Do not cover surface roots; such cover can drown the plant. **CAMELLIAS MUST HAVE A FEW ROOTS ON TOP OF THE GROUND.**

With two new exceptions, be sure your camellias are shaded. Filtered sun is best. A pine grove is great. If these are not available, 63% shade cloth should suffice. Camellias also

need good air circulation during the spring and summer. Air circulation retards disease, fungi and pests that may live in the protection provided by dense growth within the plant.

If you mulch, mulch the top with pine straw or pine bark nuggets, to let air through to the surface level. This mulch will keep the roots protected from the elements and the summer heat. Do not use leaves or "landscape mix" mulch. They prevent much needed air from getting to the roots. Leaves and hardwood bark will mat, get soggy and drown the camellias.

Planning: May is the time to prepare root stock for next year's grafts. *C. hiemalis* 'Kanjiro' and winter-hardy *C. hybrid* 'Winter' Star stock is preferred because the roots are more tolerant to adverse conditions, such as tight soil and moisture and are immune to (phytophthora) root rot. However, many *C. japonicas* can be acceptable. You will get a higher percent of "take" with same species grafting: *C. japonica* on *C. japonica*, *C. sasanqua* on *C. sasanqua* etc., if you cannot get access the two cultivars named in the first line of this paragraph. The main idea is to have good, healthy root stock in the proper soil and environment available when you need it. Strong root stock is the key to successful grafting; the stronger the better. Most grafts are unsuccessful because of root stock death. We have found that the spring application of Jack's Secret™ cuts our grafting loss. This compares with 40% to 50% and greater in prior years.

April and May are good months to do air layering. However, faster rooting may be probable later, perhaps late June, when initial new spring growth is more nearly hardened off. Air layering is an excellent way to expand your cutting plant stock. Air layering is a great way to expand a camellia collection and develop plant and root stock for future years. Its downside is that it can be time consuming and therefore may not economically feasible.

Conclusion

In May and June, the best thing you can do for your camellias is to protect them from disease and insect damage. They are completing bud setting for the winter blooming season and there isn't much they need other than to be left alone.

Brand and trade names and treatment portions are given for information and reference only. Consult your State Agricultural and Pesticide agencies for recommended chemicals registered by the State. Always follow instructions on the label.

July and August

July is usually the beginning of the hot, dry season. Water when the soil around the top of the plant is dry to the touch, about 2 inches down. Water more frequently if the plant is deeply rooted, or in a container and is approaching being pot bound. Don't water again until the next time they are almost dry. Generally, this will be about once a week in the summer.

Over watering will kill camellias just as fast as over fertilizing. Unfortunately, the more fertilizer you apply, the more frequently you must water. It can be a "catch 22." Too much water will drown the plant. The top of the soil may be dry, but the bottom of the plant, the lower root area, may be soggy. In *C. japonica* this can lead to souring and Phytophthora root rot, a fungal disease which can only be prevented. Prevent the soggy condition by not over watering and keeping the plant container just a bit larger than the plant, if possible. Be sure to drench the plants thoroughly when you water to keep fertilizer salts from accumulating beneath the plant. Good drainage is a must! A layer of pine bark nuggets in the bottom of a container can help in the prevention of root rot and drowning. Resist the temptation to over water.

Root rot (*phytophthora cinnamomi*) is generally a summer problem, caused by over watering.

Phytophthora root rot can best be prevented by proper soil and watering. (Camellias are immune to fusarium and pythium root rots.) It can occur before you realize it. Some *C. japonica* cultivars are more sensitive to over watering than other *C. Japonica*.

Phytophthora root rot, is not a problem with *C. sasanqua* or *C. oleifera*. *C. sasanqua* and *C. oleifera* are immune to *phytophthora*, but they will drown. A good way to prevent root rot in sensitive japonica cultivars is to graft them to strong *C. sasanqua* or *C. oleifera* root stock or other rootstock from plants that are immune to phytophthora root rot. We have had excellent results using the winter-hardy *C. hybrid*, 'Winter's Star,' as root stock. It is a hybrid of (*C. hiemalis* X *C. oleifera*) and *C. hiemalis*. *C. hiemalis* cultivar 'Kanjiro' is also an excellent candidate for root stock.

The best prevention of root rot is a loose, well drained soil. Two prevention agents of root rot are Subdue™ and Ridimil™. These two chemicals are exactly the same, manufactured by the same company, and sold in liquid and powder forms. The difference is bureaucratic: Ridimil™ is "approved" for tobacco, only. Applications of Subdue™ two to three times a year, according to directions, is generally sufficient to prevent phytophthora root rot. However, this prevention is good only as long as the chemical is present. When the Subdue™ is gone from the soil around the plant, the plant is again susceptible to root rot.

Banrot™ is a good phytophthora root rot remedy for camellias as is Alliette™. They have the disadvantage in that they must be used more frequently than Subdue™. Alliette™ and Banrot™ will not only prevent, but can cure root rot in phytophthora root rot susceptible camellias, if the disease is caught in its early stages.

Cotton root rot was prevalent in many areas where cotton was grown and may still be in the soil in those areas. There is no cure for cotton root

rot and it will kill camellias. The best prevention is planting camellias in areas of lower pH, away from areas of neutral to higher pH formerly planted in cotton, if possible. Cotton root rot is dormant in the soil when the soil pH is below 6 ? to 7 (neutral).

On hot summer days, sprinkle the foliage with water in the middle of the afternoon. The plants will be cooler, healthier and happier. They might even bloom better. Do not sprinkle them in more humid growing climates. Camellia dieback is spread by contaminated water blowing from one plant to another. Dieback fungus is more prevalent in the more humid areas and sprinkling could possibly help spread the fungus from plant to plant.

Pests: The most apparent insect/pest in July and August time is the Japanese beetle. Japanese beetles can chew up both new and mature growth and decimate a plant before you even realize they are around. Keep a sharp watch for them. Sevin™ (carbaryl) and rotenone are about the most effective of any chemical killers. It can take a large quantity of these to kill Japanese beetles and the beetles may make shreds of the plants before the poisons can be applied or take effect. Bt or something similar are suggested.

Do not place Japanese beetle traps near your plants. If you cannot place traps a long distance (at least 100 yards or farther) from your plants, it is better not to use this technique. The beetles will devour anything near the trap as they try to enter it. Traps are great lures and can attract these pests in droves.

Late August, when new growth is about 80% hardened off, is an excellent time to start rooting cuttings. Prepare your rooting medium. Mix 1/2 coarse peat moss and 1/2 clean, sharp sand as a soil medium. Mix in 20% to 40% perlite by volume. Put this soil medium in a well drained tray or small container (rose liners are very good) to prevent root tangling between

plants.

Dip the sliced end of the cutting in good IBA rooting solution and stick it in a moist medium to a depth of about one inch. Caution: Dilute root stimulator a little bit for *C. sasanqua* cuttings. It can be too strong and possibly kill them.

Stick the cutting into the rooting medium to a depth of one or one and one-half inches. After placing cuttings in this medium, put the cuttings in a mist bed, applying 5 to 10 seconds of mist every 8 to 10 minutes. If you cannot do that, put the cuttings in a very high humidity environment. Keep the rooting bed in a shaded but well lit, wind protected area. In winter, try to keep the root area warm. Whatever technique you use, do not let the cuttings become dry. Keep the cuttings and the medium moist, not wet.

Under optimum conditions, rooting should take place in 3 ? to 6 months for most cultivars. If it takes a long time for rooting to occur it could be due to one of three things:

(1) The cutting has formed a large callus ("popcorn") which will retard rooting. Break off the callus and put the cutting back in the bed. It should then root. Some cultivars must go through this process before they will probably root. (2) Some camellia varieties root more readily than others. The slow ones may take a long time.

(3) Temperature. Above or below the optimum temperature, 70°F, the roots take a proportionately longer time to form.

When a cutting exhibits a strong and healthy root system, bump it into a larger container to grow more before planting it in the ground. If you use the our suggested pine bark mulch/sand soil mix, you can bump them directly into 3 gallon containers.

A rooted cutting should produce blooms in one to five years, dependent upon its growth rate, the particular cultivar and how "happy" it is. Don't get your camellias too happy or they might choose not to bloom as heavily

as you would like.

General Care in July and August: Camellia surface roots should be protected from heat and direct sun. If necessary and/or feasible, mulch. Pine straw and pine bark "nuggets" make an excellent mulch. Primary reason for mulching is to keep the roots cool and prevent moisture loss. This may sound strange in light of previously stated points about over watering and root rot, but good drainage remedies the problem. Cooling camellia roots in summer also helps prevent root rot.

In mid August, you might want to check the fertilizer prills you applied in the spring. Another round of fertilizer may be required. Use a (slow release) moderate nitrate nitrogen or urea nitrogen. A 3-1-2 ratio fertilizer is recommended. Avoid a high ammonia content nitrogen. It will force a large burst of late season growth and the plant will become "leggy," misshapen and produce fewer viable buds. Late growth can make the plant grow beyond its bloom buds, kicking them off or turning them into lateral buds. As a rule, lateral blooms do not sell plants as well as terminal blooms.

I suggest an application of 0-20-0 at a rate of about one teaspoon per gallon container, proportionately more for larger containers, during August. This application of phosphorus strengthens both new blooms and roots.

Conclusion

Brand and trade names and treatment portions are given for information and reference only. Consult your State Agricultural and Pesticide agencies for recommended chemicals registered by the State. Always follow instructions on the label.

•••••

New gardeners learn by trowel and error.

GIBBERELLIN—A REAL PROBLEM

David L. Feathers, Lafayette, California

The Camellia Bulletin, May 1964

Introduction of gibbing for camellias caused much excitement and discussion among the amateur exhibitors and judges of camellia shows. Although this technique has not yet reached the general public except indirectly, it may do so eventually.

Because this practice yields benefits, it is here to stay, even if it ultimately proves to be injurious or even fatal to some camellia plants; applying gibberellin to camellias is just too sensational. Years ago, the American Camellia Society recommended that separate classes be established for (1) blooms grown outdoors (unprotected), (2) and blooms grown indoors (protected). Later, rules were adopted relating to "chemically treated" blooms, but no definite position was taken in this regard; thus, such blooms may be exhibited against those grown normally or they may be separately competed, according to the rules of the local society. We can have a situation where no distinction is made between flowers developed artificially and those grown naturally, at some California shows. Only size differentiation matters there.

This article doesn't argue for or against gibberellin's use. Use is for each individual to decide, for his own conditions. We are concerned only with using gibberellin-treated flowers in shows. That this is an issue may not be obvious.

Gibberellin produces earlier flowers, which is desirable almost everywhere and just about indispensable in those areas which are subject to killing freezes during the normal blooming season. This importance is relative to the weather conditions of each area. Here in California, it is of value in expanding the season, not in assuring we have blooms for our shows. Without

"gibbing," one with a large collection of species and varieties here can have camellias from October through May; 8 months should seem adequate. That also would be true in other benevolent climates.

Thus, in some environments, there would be little benefit to gain from gibberellin treatment, except to provide early flowering for an occasion or to alter the size of the blooms. I agree that there is little need for gibbing camellias in my area. Consequently, where climate is not a factor one concludes that gibbing flowers by competitors in shows was done primarily for size.

What are the consequences where even a few exhibitors enter gibbed blooms? This depends on what the show rules are. At first glance, it would appear unfair to permit gibbed blooms to be entered against normally grown blooms, if size is part of judging. But is the public benefitted by exhibiting them separately in the same show, even under some designation as "chemically treated" blooms? In either case, the normally grown bloom is often going to be eclipsed by the gibbed flower.

Thus the incentive to enter naturally grown blooms will suffer one more setback, similar to the case when greenhouse-grown blooms came to shows.

What are the stated objectives of camellia societies and camellia shows? Most say, "... furtherance of the enjoyment and benefits derived from the culture of camellias and the dissemination of knowledge related thereto." It presupposes we are talking about the camellia as a flowering plant, not about camellia blooms at shows, which are really only a part of camellia culture.

If this is true, then the use of an artificial stimulant is simply not appropriate for a public show,

regardless of how glamorous the flower.

One could advocate butchering one's plants in order to get massive blooms, much as they do with chrysanthemums! There is no question that enormous flowers can be obtained in this way, but would we advocate such culture when the result is a repulsive landscape plant?

I believe camellia societies and publications should devote more time and energy to the concept that the camellia is the finest ornamental evergreen plant extant, but not unintentionally fooling show visitors about the sizes of plant blooms. Gib effects are beyond the comprehension of the general public, which has

difficulty enough with culture. Is this good?

It is not a question to which one can give an unqualified answer. But one wonders what the effect is going to be upon the general public, the society membership, the popularity of the show and the camellia nurseryman. The attrition of our commercial friends was alarming. The camellia hobby is bound to suffer.

I believe our main attention should be the development of new and better camellias, and the control of discouraging petal blight, rather than artificially doctoring blooms to make them bigger. If we really embrace our stated objectives, then these should be our goals.



Steve Mefford and Linda Rodriguez, Present and Past Presidents of Orange County Camellia Society smiling after another successful show

Join Australia and New Zealand Camellia Societies

Australia Society
\$21.00 Single
\$23.00 Family

New Zealand Society
\$21.00 Single
\$24.00 Family

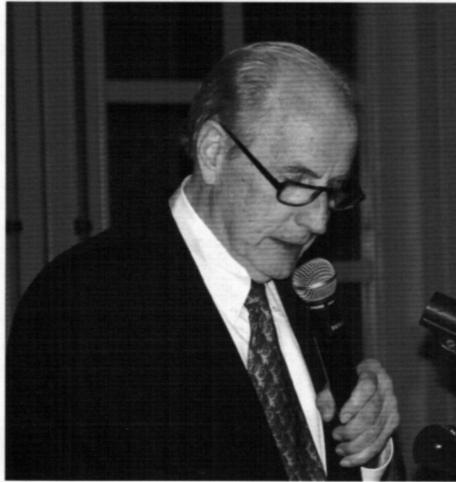
These are U.S. dollars.

Send your check payable to Southern California Camellia Society
c/o Beth Stone
1997 Queensberry Road
Pasadena, California 91104-3351.

BOB EHRHART SPEAKS TO A COMBINED MEETING OF PACIFIC AND SOUTHERN CALIFORNIA CAMELLIA SOCIETIES

After Bob thanked Wayne Walker for inviting him to speak, the Braccis for following up to see that he got to the meeting and the Directors of the two societies, Bob told the group that this was the third time he had been asked to address this group and that he was proud to be invited again.

Bob spoke two years ago at what turned out to be a very special meeting. Ralph Peer was being honored with the ACS Fellow Award for his contributions to the American Camellia Society. The



award was accepted by Ralph Peer III on behalf of his late father. Also at the meeting were Ed Metcalf and Julius Nuccio. At that meeting Bob's spoke about his garden and about container culture based on an article by Reg Ragland entitled "Advantages and Disadvantages of Growing Camellia in Containers."

At his first presentation before the combined group on February 24, 2000, Bob mentioned that he had good news and bad news. The Dow Jones average had crossed 11,500 (the good news) but the bad news was that Bob Brinker had issued a sell signal. He also mentioned that the interest rate yield curve had just inverted which meant that short term rates had just risen past long term rates. Thirdly, he reported that Mr. Greenspan wanted to raise rates even farther. At the 2006 meeting Bob said that the interest rate curve had once again inverted and the

Feds wanted to raise the rates just one or two or three more times then perhaps stop. The Dow Jones averages had just crawled back to 11,000 and Bob wondered where the Dow Jones average will be the next time he came to speak.

He reported that the Harvard

University Endowment Fund had grown by 20% during 2005 to \$25 billion, a gain of \$4 billion which would be enough to give 40,000 students a \$1,000 or 1,000 students a \$40,000 grant. Jack Meyer accomplished this with his staff of hundreds who were paid \$78 million. Meyer received so much criticism for the salaries he paid that he quit—and

started his own company. So, what do you think Harvard did? They took their money over to Jack's company and asked his company to manage a large part of it for them. Yale is in second place as far as wealth. They only have about \$12 to \$13 billion. The University of Texas is third with about \$10 billion, Princeton and Stanford follow. USC and UCLA have considerably less in the bank, Tulane, Bob's alma mater, has a lot less since hurricane Katrina.

A little history of the Southern California Camellia Review Editors from 1949 to present followed:

1949 Claude Chidamian,
1950 J. R. Mayfield
1951 Arthur Kane,
1952 Leonard Murname,
1953 Elizabeth Beebe and Dr. John Clairmont,

In a 1953 issue of the Review, Elizabeth Beebe included a report on a

new book published by the Southern California Camellia Society, *Camellia Culture*, by E. C. Tourje, a "must" reading for all new camellia growers. It covered the care of camellias, propagation, pest control, soils, hybridizing camellias and more. This was somewhat of a "Camellia Bible" for years. The preface was written by Ed Metcalf.

In 1959 Lynn Crawford turned over the helm to Harold Dryden who held the job for a very long time. This was the first of the editors whom Bob got to know personally. Harold Dryden did a wonderful job as Editor for 15 years until May, 1974.

In October 1974 Meyer Piet helped for one year until Bill Donnan took over. Bill was a very fine editor and carried the ball for

eleven years until 1984 when Glen Smith became Editor and served in that position until March 1989. Pat Greutert was Editor from November 1989 until 1993 when Mel Belcher became Editor. Bill Donnan continued to contribute to the Review for many years by writing articles even after becoming almost blind. Don Bergamini and Brad King are regular contributors and Marilee Gray has done considerable writing in the past.

Ray Bond's articles are always interesting.

Another camellia book that I would recommend is *The Camellia*, edited by Dave Feathers and Milton Brown. Built on the foundation laid by the Tourje book mentioned above, this book is to be updated in the near future by Dr. Clifford Parks.

Bob then reported that he had changed his potting mix quite severely. To start with he orders one yard of forest humus to which he adds a half yard of small fir bark. Then he adds about a half yard of peat moss plus 3 cubic feet of perlite, 2 cubic feet of rice hulls, one half cubic feet of spiral stone meal and one fourth cubic feet of dolomite. He told the group that this coming year he will be using

a new delayed release of nitrogen and iron.

At this same meeting we were honored to have, in addition to Bob Ehrhart, Klaus and Helga Urban from Germany. Klaus presented a lecture and slide show of his



Klaus and Helga Urban

experience growing cold-hardy camellias.

His slides demonstrated that some camellia varieties thrive in the snow. Thanks, Klaus and Helga, for visiting and for adding to our understanding of this wonderful world of camellias.



A week is a plant that has mastered every survival skill except for learning how to grow in rows.

CREATING A NEW CAMELLIA GARDEN

Bradford King
Arcadia, California

The last several years I have been planning to upgrade my front side lawn and garden. Twenty years ago when we moved into our home this 45 x12 foot area was covered by Zoysia grass, one large birch tree and three holly bushes. This "lawn" was neat, clean, low maintenance and evergreen except for the birch leaves in the fall. Lynn and I found the space plain and sterile and we soon planted a row of daylilies against the short cement wall that divided our lot from our neighbor. The daylilies softened the harshness of the cement and the profusion of June flowers made a lively and attractive display. Several years later we visited Nuccio's Nursery and bought a pink dogwood to plant in front of the daylilies. The dogwood and daylilies were some of our favorites when we lived in New England and brought a "touch of home" yet clearly "California" with the Zoysia grass all round them. I installed an irrigation system and planted a gardenia to cover the plumbing. Lynn planted perennials in half circles on either side of the driveway and various annuals for color. This fall we decided other changes were needed. The gardener removed the three holly bushes and I removed more Zoysia grass to provide a 24' x 6' space which was shaded by the birch tree. This still left six feet of Zoysia grass that extended the 45 feet not covered by other plants. This "new garden" has a northwest exposure and is shaded by a second birch tree located on the front lawn. Because late afternoon California summer sun can be very hot, we planted a Ginko Biloba between the dogwood and one of the birch trees. At our camellia society meeting in November, 2005, the panel discussed "shade strategies" and agreed that optimal shade for camellias—and people, too—is provided by full-grown trees like California live oaks.

Lynn and I were fortunate to have two mature European white birch already in place. The panel cautioned the group to avoid trees like olive, Chinese elm and liquidambar because of their invasive root systems and recommended several mid-sized trees that have been found to provide the dappled shade camellias like. Birch and Ginko were the panel's recommendation.. The white bark with black markings of the birch compensated for the fall leaf pick up. The Ginko Biloba was treasured for the unique fan-shaped leaves that turn butter yellow in the fall. The female Ginko has a profusion of foul-smelling fruit and should be avoided in favor of the male. In the Ficus family, the Indian Laurel Fig provides a pleasing free form but requires heavy yearly pruning.

Now comes the most enjoyable part. What camellias do you want to plant? To my camellia collection of 100 varieties I wanted to add some more non reticulata hybrids that look good in the landscape and have a chance to win in the camellia shows. 'Night Rider' was selected for its very dark red small bloom. 'Lucky Star' was chosen because I like the lovely rich pink medium semi double flower. I also selected 'Coral Delight' and 'Coral Delight Variegated' because they often win at the shows. These plants were heavily budded when purchased at Nuccio's Nursery and I can hardly wait to see their deep coral pink small to medium blooms this winter. Several new promising Saluensis hybrids have been showing well and 'Coral Bouquet' and 'Island Sunset' were added to the collection.. 'Coral Bouquet' is a coral pink single medium to large flower. 'Island Sunset' is a medium semi double rich coral pink that shades lighter at the center of the bloom. This flower is on the cover September-December 2003 Camellia Review. My next selection

was 'Joe Nuccio the only non-reticulata hybrid honored with the Nuccio name. This orchid pink formal double has the interesting characteristic of incurved petal tips. All of these non-reticulata hybrids were planted in a 24 foot-long space several feet in front of the small cement wall dividing the garden from our neighbor's yard. The resulting straight row and my obsession with camellias inspired several other selections. Over the years I had lost two excellent reticulatas when the gardener trampled them during the pruning of shade trees. Therefore 'Queen Bee' with its large pink flower and 'W. P. Gilley' which blooms as a large pink mottled white flower were planted in front of the hybrids to break up the linear look of the space. While they will receive more sun than the other camellias, the new ginko will provide the needed shade. Since I already had three japonicas that I had won in our Society's monthly raffles still in pots, I found places to plant them to continue the more eye pleasing look. 'White Bouquet', a medium to large semi double white flower with blush tones is a new Nuccio introduction. 'Elizabeth Weaver' is a coral pink large formal double bloomer and 'Grand Marshal Variegated' is a red and white

medium to large blooms as either a peony or anemone form.

In conclusion there are three principles to follow when creating a new camellia garden. First is to have a plan. This includes finding an appropriate location—ample space with dappled sunlight. Plan the number and types of camellias to be planted. Second is to prepare the garden. In my case this included removing three bushes and yards of grass. It is crucial to properly prepare the soil. When the old roots and rocks have been removed is the optimal time to amend the soil. Camellias need humus—coarse peat moss and oak leaf mold are two of the best choices. The soil also needs to be loose and well drained—pine bark nuggets and sand can be used in amounts that fit your conditions. How will water be provided? (I needed to improve and add to the existing automatic watering system) Third is to enjoy the project. I love the planning, thinking, and figuring out Where and How. I like the opportunity to get down and dirty while planting. Finally when I create a garden I have a vision of camellias growing, maturing and blooming. I envision waking up one cold February morning to see that special flower so beautiful it takes my breath away.



IT'S AN ILL WIND THAT BLOWS NO MAN GOOD

Bradford King

During the night of January 23, 2006 there were very high winds and rain that pelted Arcadia, Pasadena and the surrounding areas. In the early morning after a blustery night of listening to the winds, I went to raise the garage door in order to get the morning paper. I was shocked to find that one of our two birch trees had fallen across our driveway. This event gave me an excellent excuse (similar to "the dog ate my homework") to call

into work and say that I was unable to make it to the office. The tree and stump were removed by a professional tree company later that afternoon. A few days later I discovered that the water system had been damaged. This was repaired in order to provide water to the new camellia garden described above.

So where is the "good fortune" in this tale? Well, this new unplanned space provided the opportunity to add

two more camellia plants and , of course! I chose 'Nicky Crisp' and 'Harlequin'.

'Nicky Crisp', one of the very best non-reticulata hybrids, is a beautiful light pink semi-double with golden stamens. It is a clear, clean and consistent bloomer with notched petals. It is about 4" in size and blooms early to late season. Its parents are C. pitardii with unknown japonica. 'Harlequin', a 2006 Nuccio's Nursery introduction, is medium to large,

veined strawberry pink with rose-red stripes that tone deeper at the center. It has an irregular narrow white border and is quite flashy. It blooms early to mid-season. Nuccio's Nursery reports that it is a chance seedling.

The loss of the birch tree has not impacted the new camellia garden this winter, but will the summer sun necessitate that I provide additional protection for the plants? Only time will define what the 'ill wind' blew!

.. ..

PACIFIC CAMELLIA SOCIETY 40th Annual Show, Descanso Gardens January 14 and 15, 2006

Japonica—Large/Very Large

Best Single	'Snow Chan'	Tom & Dody Gilfoy
Runner-up Single	'Elegans Supreme'	Gene & Elynor Baughman
Court of Honor Single	'Katie Variegated'	Tom & Dody Gilfoy
Best Tray of 3	'Wendy'	George & Karen Harrison
Runner-up Tray of 3	'Melinda Hacket'	Gene & Elynor Baughman
Court of Honor Tray of 3	'Kramer's Supreme'	Don & Marilee Gray

Special Culture

Best Single	'Tomorrow's Tropic Dawn'	Don & Marilee Gray
Runner-up Single	'Miss Charleston Vriegated'	Don & Marilee Gray
Court of Honor Single	'Katie Variegated'	Mel & Bobbie Belcher
Best Tray of 3	'Mathotiana Supreme'	Don & Marilee Gray
Runner-up Tray of 3	'Grand Prix'	Brad & Lynn King
Court of Honor Tray	'Miss Charleston Variegated'	Don & Marilee

Japonica—Medium

Best Single	'Nuccio's Jewel'	Dale & Mary Kay Mittag
Runner-up Single	'Firedance Variegated'	Dale & Mary Kay Mittag
Court of Honor Single	'Tom Knudsen'	Victor & Linda Rodriguez
Best Tray of 3	'Margaret Davis'	Dale & Mary Kay Mittag
Runner-up Tray of 3	'Betty Foy Sanders'	Linda Tunner
Court of Honor Tray of 3	'Wildfire'	Brad & Lynn King

Special Culture

Best Single	'Firedance Variegated'	Don & Marilee Gray
Runner-up Single	'Candy Apple'	Mel & Bobbie Belcher
Court of Honor Single	'Prima Ballerina'	Jim Fitzpatrick
Best Tray of 3	'In the Red'	Don & Marilee Gray

Japonica—Small or Miniature

Best Single	'Red Hots'	Tom & Dody Gilfoy
Runner-up Single	'Buddy Variegated'	Don & Mary Bergamini
Court of Honor Single	'Grape Soda'	Michael Mathos
Best Tray of 3	'Buddy Variegated'	Don & Mary Bergamini

Runner-up Tray of 3	'Baby Sargent'	Don & Mary Bergamini
Court of Honor Tray of 3	'Tinsie'	Don & Mary Bergamini
Special Culture		
Best Single	'Red Garnet Variegated'	Mel & Bobbie Belcher
Runner-up Single	'Cabernet'	Don & Mary Bergamini
Best Tray of 3	'Something Beautiful'	Don & Mary Bergamini
Runner-up Tray of 3	'Takanini'	Don & Mary Bergamini
Court of Honor Tray of 3	'Tinsie'	Don & Mary Bergamini

Reticulata or Reticulata Hybrid

Best Single	'Frank Houser'	Tom & Dody Gilfoy
Runner-up Single	'Emma Gaeta Variegated'	Rudy Blanco
Court of Honor Single	'W. P. Gilley'	Tom & Dody Gilfoy
Best Tray of 3	'Frank Houser'	Tom & Dody Gilfoy
Runner-up Tray of 3	'Valley Knudsen'	Linda Tunner
Court of Honor Tray	'Emma Gaeta Variegated'	Gene Snooks

Special Culture

Best Single	'Harold L. Paige'	Mel & Bobbie Belcher
Runner-up Single	'John Hunt'	Mel & Bobbie Belcher
Court of Honor Single	'Linda Carol'	Don & Marilee Gray
Best Tray of 3	'Frank Houser'	Brad & Lynn King
Runner-up Tray of 3	'LASCA Beauty'	Don & Mary Bergamini
Court of Honor Tray of 3	'Francie L.'	Mel & Bobbie Belcher

Non-Reticulata Hybrid

Best Single	'Waltz Time Variegated'	Dale & Mary Kay Mittag
Runner-up Single	'Buttons 'n Bows'	Dale & Mary Kay Mittag
Court of Honor Single	'Coral Delight Variegated'	Jac Fagundo
Best Tray of 3	'Sweet Jane'	Bob & Mary Sheriff
Runner-up Tray of 3	'Coral Delight Variegated'	Brad & Lynn King
Court of Honor Tray of 3	'Freedom Bell'	George & Karen Harrison

Special Culture

Best Single	'Nicky Crisp'	Don & Marilee Gray
Runner-up Single	'Jackpot'	Don & Marilee Gray
Court of Honor Single	'Buttons 'n Bows'	Don & Marilee Gray
Best Tray of 3	'Delores Edwards'	Don & Marilee Gray
Runner-up Tray of 3	'Buttons 'n Bows'	Don & Marilee Gray

Species

Best	'Egao'	Mel & Bobbie Belcher
Runner-up	'Kanjiro'	Boris & Kathryn Korin
Court of Honor	'Shibori Egao'	Gene & Elynor Baughman
Best Tray of 3	'Egao'	Mel & Bobbie Belcher
Runner-up Tray of 3	'Grady's Egao'	Brad & Lynn King
Court of Honor Tray of 3	'Nishiki Kirin'	Don & Mary Bergamini

Collector's Tray of 3 Mixed Varieties

Best Tray	'Dr. Clifford Parks', 'Grand Marchal', 'Maroon and Gold'	Todd & Lindsey Brewer
Runner-up	'Jack Mandarich', 'Satsuma Kurgei', 'Kurgei', 'Black Tie'	Don & Mary Bergamini
Court of Honor	'Prima Ballerina', 'Nicky Crisp', 'Buttons 'n Bows'	Don & Marilee Gray

Collector's Tray of 6 Different Varieties

Best		Don & Marilee Gray
Runner-up		Todd & Lindsey Brewer

Old Timer's Bloom—Pre 1960

Best	'Tri-Color Siebold'	Dale & Mary Kay Mittag
Runner-up	'Ville de Nantes Red'	Dale & Mary Kay Mittag
Court of Honor	'Elegans Chandler'	Lucia Marino

Best Seedling

Don & Mary Bergamini

Novice

Best 4 inches or larger	'Tiffany'	Eleanor Muller
Runner-up	'Shiro Chan'	Eleanor Muller
Court of Honor	'Glen 40'	Eleanor Muller
Best less than 4 inches	'Spring Sonnet'	Stephen & Anne Dashiell
Runner-up	'Betty's Beauty'	Stephen & Anne Dashiell
Court of Honor	'Debutante'	Stephen & Anne Dashiell

Intermediate

Best 4 inches or larger	'C. M. Wilson'	Robert Martin
Best less than 4 inches	'Herme'	Robert Martin



ORANGE COUNTY CAMELLIA SOCIETY

5th Annual Show, Rogers Gardemn

January 21 and 22, 2006

Japonica—Large/Very Large

Best Single	'Miss Charleston Variegated'	Don & Marilee Gray
Runner-up Single	'Kramer's Supreme'	Victor & Linda Rodriguez
Court of Honor	'Mike Witman Variegated'	Don & Mary Bergamini
Best Tray of 3	'Katie'	Linda Tunner
Runner-up Tray of 3	'Nuccio's Bella Rossa'	George & Karen Harrison
Court of Honor Tray of 3	'Henry Huntington'	Linda Tunner

Special Culture

Best Single	'Miss Charleston Variegated'	Mel & Bobbie Belcher
Runner-up Single	'Snowman'	Mel & Bobbie Belcher
Court of Honor Single	'Katie Variegated'	Mel & Bobbie Belcher
Best Tray of 3	'Miss Charleston Variegated'	Don & Marilee Gray
Runner-up Tray of 3	'Maria Bergamini'	Don & Mary Bergamini
Court of Honor Tray	'Kramer's Supreme'	Don & Marilee Gray

Japonica—Medium

Best Single	'Cherries Jubilee'	Mel & Bobbie Belcher
Runner-up Single	'Glen 40'	Mel & Bobbie Belcher
Court of Honor Single	'Mrs. George Bell'	Dale & Mary Kay Mittag
Best Tray of 3	'Margaret Davis'	Dale & Mary Kay Mittag
Runner-up Tray of 3	'Herme'	Vivian Skirvin
Court of Honor Tray of 3	'Tri Color Siebold'	Dale & Mary Kay Mittag

Special Culture

Best Single	'San Dimas'	Don & Marilee Gray
Runner-up Single	'Betty Foy Sanders'	Brad & Lynn King
Court of Honor Single	'Prima Ballerina'	Don & Marilee Gray

Best Tray of 3	'Nuccio's Carousel'	Brad & Lynn King
Runner-up Tray of 3	'Grand Marshal'	Don & Mary Bergamini
Japonica—Small		
Best Single	'Red Hots'	Todd & Lindsey Brewer
Runner-up Single	'Ave Maria'	Mel & Bobbie Belcher
Court of Honor Single	'Maroon and Gold'	Don & Mary Bergamini
Best Tray of 3		
Special Culture		
Best Single	'Maroon and Gold'	Brad & Lynn King
Runner-up	'Red Hots'	Don & Marilee Gray
Court of Honor	'Buddy Variegated'	Don & Mary Bergamini
Japonica—Miniature		
Best Single	'Grace Albritton'	Mel & Bobbie Belcher
Runner-up Single	'Spindrift'	Don & Mary Bergamini
Court of Honor Single	'Little Michael'	Bob & Mary Sheriff
Special Culture		
Best Single	'Kewpie Doll'	Don & Marilee Gray
Runner-up Single	'Tinsie'	Don & Mary Bergamini
Court of Honor Single	'Spindrift'	Don & Mary Bergamini
Japonica—Small or Miniature		
Best Tray of 3	'Red Hots'	Don & Marilee Gray
Runner-up Tray of 3	'Buddy Variegated'	Don & Mary Bergamini
Court of Honor Tray of 3	'Tama Peacock'	George & Karen Harrison
Reticulata or Reticulata Hybrid		
Best Single	'John Hunt'	Doug Nowlin
Runner-up Single	'Emma Gaeta Variegated'	Rudy Blanco
Court of Honor Single	'Miss Tulare'	Gene Snooks
Best Tray of 3	'Emma Gaeta Variegated'	Rudy Blanco
Runner-up Tray of 3	'Frank Houser'	David & Susan Trujillo
Court of Honor Tray of 3	'Terrell Weaver'	Gene Snooks
Special Culture		
Best Single	'Frank Houser'	Brad & Lynn King
Runner-up Single	'Lady Pamela'	Don & Mary Bergamini
Court of Honor Single	'Larry Piet'	Don & Mary Bergamini
Best Tray of 3	'Betty Ridley'	Don & Mary Bergamini
Runner-up Tray of 3	'Emma Gaeta Var.'	Don & Mary Bergamini
Court of Honor Tray of 3	'LASCA Beauty'	Don & Mary Bergamini
Non-Reticulata Hybrid		
Best Single	'Julie'	Dale & Mary Kay Mittag
Runner-up Single	'Buttons 'n Bows'	Dale & Mary Kay Mittag
Court of Honor Single	'Coral Delight'	Dale & Mary Kay Mittag
Best Tray of 3	'Waltz Time Variegated'	Dale & Mary Kay Mittag
Runner-up Tray of 3	'Coral Delight Variegated'	Brad & Lynn King
Court of Honor Tray of 3	'Freedom Bell'	Don & Marilee Gray
Special Culture		
Best Single	'Bett's Supreme'	Don & Mary Bergamini
Runner-up Single	'Nicky Crisp'	Don & Marilee Gray
Court of Honor Single	'Charlean'	Don & Mary Bergamini
Best Tray of 3	'Julie Variegated'	Don & Mary Bergamini

Runner-up Tray of 3	'Buttons 'n Bows'	Don & Marilee Gray
Species		
Best	'Shibori Egao'	Mel & Bobbie Belcher
Runner-up	'Kanjiro'	Vivian Skirvin
Court of Honor	'Botan Yuki'	Don & Mary Bergamini

Collector's Tray of 3 Mixed Varieties

Best Tray	'Adolphe Audusson Variegated', 'Firedance Var.', 'Marchioness of Salisbury'	Don & Marilee Gray
Runner-up Tray	'Show Time', 'Prima Ballerina' 'Hishi-Karaito'	Gene Snooks
Court of Honor Tray	'Frank Houser', 'In the Pink', 'Hishi-Karaito'	Don & Marilee Gray

Best Seedling

Best Sport

Best Fragrant Bloom

'Margaret Davis' Sport	Don & Mary Bergamini
'High Fragrance'	Bob & Mary Sheriff
	Don & Mary Bergamini

Intermediate

Best	'Carter's Sunburst'	Mary Romeo
Runner-up	'Shishi Gashira'	Mary Romeo



SOUTHERN CALIFORNIA CAMELLIA SOCIETY
57th Annual Show, Descanso Gardens
January 28 and 29, 2006

Japonica—Large/Very Large

Best Single	'Katie'	Linda Tunner
Runner-up Single	'Grand Slam'	Don & Mary Bergamini
Court of Honor Single	'Royal Velvet'	Todd & Lindsey Brewer
Best Tray of 3	'Snow Chan'	Mel & Bobbie Belcher
Runner-up Tray of 3	'Katie Variegated'	Brad & Lynn King
Court of Honor Tray of 3	'Miss Charleston Var.'	Don & Marilee Gray

Special Culture

Best Single	'Tomorrow Park Hill'	Mel & Bobbie Belcher
Runner-up Single	'Miss Charleston Var.'	Don & Marilee Gray
Court of Honor Single	'Grand Prix'	Mel & Bobbie Belcher
Best Tray of 3	'Miss Charleston Var.'	Don & Marilee Gray
Runner-up Tray of 3	'Kramer's Supreme'	Don & Marilee Gray
Court of Honor Tray	'Mathotiana Supreme'	Don & Marilee Gray

Japonica—Medium

Best Single	'Nuccio's Carousel'	Marvin & Virginia Belcher
Runner-up Single	'Margaret Davis'	Dale & Mary Kay Mittag
Court of Honor Single	'Betty Foy Sanders'	Brad & Lynn King
Best Tray of 3	'Firedance Variegated'	Don & Marilee Gray
Runner-up Tray of 3	'Margaret Davis'	Dale & Mary Kay Mittag
Court of Honor Tray of 3	'Wildfire'	Brad & Lynn King

Special Culture

Best Single	'Ace o' Hearts'	Mel & Bobbie Belcher
Runner-up Single	'Prima Ballerina'	Don & Marilee Gray
Court of Honor Single	'In the Red'	Don & Marilee Gray

Best Tray of 3	'Herme'	Brad & Lynn King
Japonica—Small		
Best Single	'Maroon and Gold'	Mel & Bobbie Belcher
Runner-up Single	'Red Hots'	George & Karen Harrison
Court of Honor Single	'Grape Soda'	Michael Mathos
Special Culture		
Best Single	'Little Man'	Don & Mary Bergamini
Runner-up Single	'Black Gold Variegated'	Don & Mary Bergamini
Court of Honor Single	'Maroon and Gold'	Brad and Lynn King
Japonica—Miniature		
Best Single	'Sue Kendall'	Gary & Sue Schanz
Runner-up Single	'Lemon Drop'	Mel & Bobbie Belcher
Court of Honor Single	'Man Size'	Dale & Mary Kay Mittag
Special Culture		
Best Single	'Something Beautiful'	Don & Mary Bergamini
Runner-up Single	'Tinsie'	Don & Mary Bergamini
Court of Honor Single	'Pretty in Pink'	Don & Mary Bergamini
Japonica—Small or Miniature		
Best Tray of 3	'Pink Perfection'	Dale & May Kay Mittag
Runner-up Tray of 3	'Buddy Variegated'	Don & Mary Bergamini
Court of Honor Tray of 3	'Red Hots'	Jackie Randall
Special Culture		
Best Tray of 3	'Tama-No-Ura'	Don & Mary Bergamini
Runner-up Tray of 3	'Red Hots'	Don & Marilee Gray
Japonica—Pre 1950		
Best	'Herme'	Todd & Lindsey Brewer
Runner-up	'General George Patton'	Lucia Marino
Court of Honor	'Tri Color Siebold'	Dale & Mary Kay Mittag
Reticulata or Reticulata Hybrid		
Best Single	'LASCA Beauty'	Mel & Bobbie Belcher
Runner-up Single	'Frank Houser'	Bob & Mary Sheriff
Court of Honor Single	'Emma Gaeta Variegated'	Rudy Blanco
Best Tray of 3	'Frank Houser'	Rudy Blanco
Runner-up Tray of 3	'LASCA Beauty'	Mel & Bobbie Belcher
Court of Honor Tray of 3	'Jack Mandarich'	Don & Mary Bergamini
Special Culture		
Best Single	'Harold L. Paige'	Mel & Bobbie Belcher
Runner-up Single	'Frank Houser Variegated'	Gary & Carol Schanz
Court of Honor Single	'John Hunt'	Brad & Lynn King
Best Tray of 3	'Emma Gaeta Variegated'	Don & Marilee Gray
Runner-up Tray of 3	'Arcadia'	Don & Marilee Gray
Court of Honor Tray	'Reticulate Leaf Pink'	Don & Mary Bergamini
Non-Reticulata Hybrid		
Best Single	'Waltz Time Variegated'	Dale & Mary Kay Mittag
Runner-up Single	'Coral Bouquet'	Dale & Mary Kay Mittag
Court of Honor Single	'Julie'	Dale & Mary Kay Mittag
Best Tray of 3	'Waltz Time Variegated'	Mel & Bobbie Belcher
Runner-up Tray of 3	'Spring Festival'	Don & Mary Bergamini

Court of Honor Tray of 3	'Demure'	Linda Tunner
Special Culture		
Best Single	'Island Sunset'	Don & Mary Bergamini
Runner-up Single	'E. G. Waterhouse'	Don & Mary Bergamini
Court of Honor Single	'Water Lily'	Don & Mary Bergamini
Best Tray of 3	'Delores Edwards'	Don & Mary Bergamini
Runner-up Tray of 3	'Buttons 'n Bows'	Don & Marilee Gray
Court of Honor Tray of 3	'E. G. Waterhouse'	Don & Mary Bergamini

Species

Best	'Egao'	Mel & Bobbie Belcher
Runner-up	'Shibori Egao'	Boris & Kathryn Korin
Court of Honor	'Botan Yuki'	Don & Mary Bergamini
Best Tray of 3	'Shibori Egao'	Don & Marilee Gray
Runner-up Tray of 3	'Shishi-Gashira'	Brad & Lynn King

Collector's Tray of 3 Mixed Varieties

Best	'LASCA Beauty', 'Betty Ridley', 'Sweet Jane'	Don & Mary Bergamini
Runner-up	'Elegans Splendor', 'Kewpie Doll', 'Nuccio's Pearl'	Don & Marilee Gray
Court of Honor	'Man Size', 'Silver Tower', 'White Retic'	Gene Snooks

Best Seedling

Don & Mary Bergamini

Novice

Best Large/Very Large	'Herme'	Milton Brown
Runner-up Large/Very Large	'Owen Henry'	Milton Brown
Best Med., Min., Small	'Ville de Nantes'	Milton Brown
Runner-up Med. Min., Small'	'Elegans Chandler'	Milton Brown
Court of Honor	'Purity'	Milton Brown

Intermediate

Best Large/Very Large	'Mathotiana'	James & Peggy Neiman
Best Med., Min. or Small	'Spring Sonnet'	Stephen & Anne Dashiell
Runner-up	'Nuccio's Pink Lace'	Stephen & Anne Dashiell
Court of Honor	'Dorothy James'	Stephen & Anne Dashiell

CAMELLIA STATIONERY

Our beautiful camellia notecards are still available in sets of eight for \$6.00 including tax and shipping. Folks who use them and re-order tell us how truly lovely they are. They make wonderful gifts for your fellow camellia lovers or those you are trying to get interested in this great hobby! You can even order them for your own use. They also look beautiful in frames. Cards can be ordered through Dorothy Grier, 13229 Pipeline Avenue, Chino, CA 91710 (909) 628-1380. Make your check payable to SCCS.

If any camellia society would like to use these cards as fund raisers, orders for 25 or more sets are priced at \$5.00 each, including tax and shipping.

SAN DIEGO CAMELLIA SOCIETY

58th Annual Show

February 4 and 5, 2006

Japonica—Large/Very Large

Best Single	'Miss Charleston Variegated'	Don & Marilee Gray
Runner-up Single	'Moonlight Bay'	Steve & Nancy Mefford
Court of Honor Single	'Royal Velvet'	Lew & Joanna Gary
Best Tray of 3	'Guilio Nuccio'	Les & JoAnn Brewer
Runner-up Tray of 3	'Kramer's Supreme'	Lew & Joanna Gary
Court of Honor Tray of 3	'C. M. Wilson'	Linda Turner

Japonica—Medium

Best Single	'Mrs. George Bell'	Mel & Bobbie Belcher
Runner-up Single	'Betty Foy Sanders'	Don & Marilee Gray
Court of Honor Single	'Nuccio's Carousel'	Steve & Nancy Mefford

Japonica—Small or Miniature

Best Single	'Man Size'	Don & Marilee Gray
Runner-up Single	'Lemon Drop'	Don & Marilee Gray
Court of Honor Single	'Kewpie Doll'	Victor & Linda Rodriguez

Japonica—Medium, Small or Miniature

Best Tray of 3	'Firedance'	Don & Marilee Gray
Runner-up Tray of 3	'Debutante'	Les & JoAnn Brewer
Court of Honor Tray of 3	'Haru-No-Utena'	Julius & Dorothy Christinson

Japonica—Special Culture

Best	'Miss Charleston Var.'	Don & Marilee Gray
Runner-up	'Elegans Splendor'	Don & Marilee Gray
Court of Honor	'Nuccio's Carousel'	Don & Marilee Gray

Reticulata or Reticulata Hybrid

Best Single	'Frank Houser'	Don & Marilee Gray
Runner-up	'Valentine Day Variegated'	Gene Snooks
Court of Honor	'Ruta Hagmann'	Mel & Bobbie Belcher
Best Tray of 3	'Frank Houser'	Don & Marilee Gray
Runner-up Tray of 3	'Dr. Clifford Parks'	Les & JoAnn Brewer
Court of Honor Tray of 3	'Valentine Day Variegated'	Gene Snooks

Special Culture

Best	'Nuccio's Ruby'	Mel & Bobbie Belcher
Runner-up	'Harold L. Paige'	Mel & Bobbie Belcher
Court of Honor	'Frank Houser'	Don & Marilee Gray

Non-Reticulata Hybrid

Best Single	'Nicky Crisp'	Steve & Nancy Mefford
Runner-up Single	'Coral Bouquet'	Victor & Linda Rodriguez
Court of Honor Single	'Grady's Egao'	Don & Marilee Gray
Best Tray of 3	'Spring Festival'	Steve & Nancy Mefford
Runner-up Tray of 3	'High Fragrance'	Don & Marilee Gray
Court of Honor Tray of 3	'Buttermint'	Don & Marilee Gray

Special Culture

Best	'Nicky Crisp'	Don & Marilee Gray
Runner-up	'Pink Dahlia'	Don & Marilee Gray
Court of Honor	'Buttons 'n Bows'	Don & Marilee Gray

Collector's Tray of 3 Mixed Varieties

Best Tray	'Elegans Splendor', 'Pink Wings', 'Buttons 'n Bows'	Don & Marilee Gray
Runner-up Tray	'Fashionata', 'South Seas', 'Little Michael'	Les & JoAnn Brewer Les & JoAnn Brewer
Court of Honor	'Dr. Clifford Parks', 'Maroon and Gold'	

Species

Best	'Kanjiro'	Linda Tunner
Runner-up	'Egao'	Bob & Mary Sheriff
Court of Honor	'Shishi-Gashira'	Don & Martha Beckman

Fragrant

Best	'Spring Mist'	Larry & Diane Perry
Runner-up	'High Fragrance'	Victor & Linda Rodriguez

Best Sport

'Margaret Davis' sport	Bob & Mary Sheriff
------------------------	--------------------

Best 1-2 Year Old Graft

'Harvey Short's Finale'	Gene Snooks
-------------------------	-------------

Best Camellia Plant in Bloom

'Oo-La-La'	Michael Mathos
------------	----------------

Best Flower – San Diego County

'Katie'	Sharon Lee
---------	------------

Runner-up	'Tiffany'	Lew & Joann Gary
-----------	-----------	------------------

Court of Honor	'Kramer's Supreme'	Michael Mathos
----------------	--------------------	----------------

Novice

Best	'Guilio Nuccio Var.'	Don & Martha Beckman
------	----------------------	----------------------

Runner-up	'Mrs. Tingley'	Don & Martha Beckman
-----------	----------------	----------------------

Court of Honor	'Elegans Splendor'	Nora Lovejoy
----------------	--------------------	--------------

Intermediate

Best	'Howard Asper'	Sharon Lee
------	----------------	------------

Runner-up	'Kramer's Supreme'	Sharon Lee
-----------	--------------------	------------

Court of Honor	'Maroon and Gold'	Sharon Lee
----------------	-------------------	------------



POMONA VALLEY CAMELLIA SOCIETY

50th Annual Camellia Show

February 18 and 19, 2006

Japonica—Large/Very Large

Best Single	'Moonlight Bay'	Tom & Dody Gilfoy
Runner-up Single	'Royal Velvet'	Jane Brady
Court of Honor Single	'Royal Velvet Variegated'	Tom & Dody Gilfoy
Best Tray of 3	'Royal Velvet'	Jane Brady
Runner-up Tray of 3	'Grand Prix'	Linda Tunner
Court of Honor Tray of 3	'Kramer's Supreme'	Victor & Linda Rodriguez
Best Tray of 5	'Royal Velvet'	Jane Brady
Runner-up Tray of 5	'Miss Charleston Variegated'	Don & Marilee Gray
Court of Honor Tray of 5	'Julia France'	Tom & Dody Gilfoy

Japonica—Medium

Best Single	'Ville de Nantes'	Tom & Dody Gilfoy
Runner-up Single	'Nuccio's Carousel'	Tom & Dody Gilfoy
Court of Honor Single	'Desire'	Tom & Dody Gilfoy

Best Tray of 3
 Runner-up Tray of 3
 Court of Honor Tray of 3
 Best Tray of 5
 Runner-up Tray of 5
 Court of Honor Tray of 5

'Glen 40'
 'Nuccio's Carousel'
 'Prima Ballerina'
 'Margaret Davis'
 'Prima Ballerina'
 'Haru-No-Utena'

Dale & Mary Kay Mittag
 Steve Mefford
 Jim Fitzpatrick
 Tom & Dody Gilfoy
 Jim Fitzpatrick
 Dale & Mary Kay Mittag

Japonica—Small

Best Single
 Runner-up Single
 Court of Honor Single
 Best Tray of 3
 Runner-up Tray of 3
 Court of Honor Tray of 3
 Best Tray of 5
 Runner-up Tray of 5

'Red Hots'
 'Maroon and Gold'
 'Ave Maria'
 'Hishi-Karaito'
 'Red Hots'
 'Tama Peacock'
 'Maroon and Gold'
 'Pink Perfection'

Jane Brady
 Les & JoAnn Brewer
 Mel & Bobbie Belcher
 Dale & Mary Kay Mittag
 Jane Brady
 George & Karen Harrison
 Tom & Dody Gilfoy
 Dale & Mary Kay Mittag

Japonica—Miniature

Best Single
 Runner-up Single
 Court of Honor Single
 Best Tray of 3
 Runner-up Tray of 3
 Best Tray of 5
 Runner-up Tray of 5
 Court of Honor Tray of 5

'Something Beautiful'
 'Man Size'
 'Lemon Drop'
 'Man Size'
 'Little Red Riding Hood'
 'Trinket'
 'Man Size'
 'Fircone Variegated'

Tom & Dody Gilfoy
 Dale & Mary Kay Mittag
 Bob & Mary Sheriff
 Les & JoAnn Brewer
 Tom & Dody Gilfoy
 Tom & Dody Gilfoy
 Mel & Bobbie Belcher
 Dale & Mary Kay Mittag

Reticulata or Reticulata Hybrid

Best Single
 Runner-up Single
 Court of Honor
 Best Tray of 3
 Runner-up Tray of 3
 Court of Honor Tray of 3
 Best Tray of 5
 Runner-up Tray of 5
 Court of Honor Tray of 5

'Frank Houser'
 'Harold L. Paige'
 'Bev Piet Variegated'
 'Frank Houser'
 'Harold L. Paige'
 'Bev Piet Variegated'
 'Lila Naff'
 'Dr. Clifford Parks'
 'Curtain Call'

Brad and Lynn King
 Carol Stickley
 Rudy Blanco
 Tom & Dody Gilfoy
 Nancy Kress
 Rudy Blanco
 Tom & Dody Gilfoy
 Les & JoAnn Brewer
 Mel & Bobbie Belcher

Non-Reticulata Hybrid

Large/Very Large/Medium

Best Single
 Runner-up Single
 Court of Honor Single
 Best Tray of 3
 Runner-up Tray of 3
 Court of Honor Tray of 3
 Best Tray of 5
 Runner-up Tray of 5
 Court of Honor Tray of 5

'Lucky Star'
 'Elsie Jury'
 'Waltz Time Variegated'
 'Lucky Star'
 'Taylor's Perfection'
 'Nicky Crisp'
 'Nicky Crisp'
 'Lucky Star'
 'High Fragrance'

Tom & Dody Gilfoy
 Sonia Movich
 Brad & Lynn King
 Dale & Mary Kay Mittag
 Jim Fitzpatrick
 Dale & Mary Kay Mittag
 Don & Marilee Gray
 Tom & Dody Gilfoy
 Don & Marilee Gray

Small or Miniature

Best Single
 Runner-up Single
 Court of Honor Single
 Best Tray of 3

'Pink Dahlia'
 'Spring Daze'
 'Buttons 'n Bows'
 'Buttons 'n Bows'

Jim & Armida Wilkin
 Dale & Mary Kay Mittag
 Sonia Movich
 Dale & Mary Kay Mittag

Runner-up Tray of 3	'Coral Delight'	Brad & Lynn King
Court of Honor	'Kramer's Fluted Coral'	Mel & Bobbie Belcher
Best Tray of 5	'Coral Delight Variegated'	Brad & Lynn King
Runner-up Tray of 5	'Spring Festival'	Steve Mefford
Court of Honor Tray of 5	'Buttons 'n Bows'	Dale & Mary Kay Mittag

Special Culture

Best Japonica	'Miss Charleston Variegated'	Don & Marilee Gray
Runner-up Japonica	'Show Time'	Jim Fitzpatrick
Court of Honor Japonica	'Prima Ballerina'	Don & Marilee Gray
Best Reticulata	'Larry Piet'	Mel & Bobbie Belcher
Runner-up Reticulata	'Nuccio's Ruby Variegated'	Mel & Bobbie Belcher
Court of Honor Reticulata	'Trophy'	Mel & Bobbie Belcher
Best Non-Reticulata	'Jackpot'	Don & Marilee Gray
Runner-up Non-Reticulata	'Pink Dahlia'	Don & Marilee Gray

Species*

Best	'Island Sunset'	Jane Brady
Runner-up	'Coral Bouquet'	George & Karen Harrison
Court of Honor	'Chekiengoleosa'	George & Karen Harrison

Collector's Tray of 3 Mixed Varieties

Best Tray	'Linda Carol', 'Nuccio's Jewel', 'Hishi-Karaito'	Don & Marilee Gray
Runner-up Tray	'Carter's Sunburst', 'Herme', 'Pink Perfection'	Beth Stone
Court of Honor Tray	'Han-Ling Snow', 'Silver Chalice', 'Man Size'	Don & Marilee Gray Don & Marilee Gray

Best Yellow Bloom

C. chrysantha Rudy Blanco

Best Fragrant Bloom

'Souza's Pavlova' Boris & Kathryn Korin

Best Seedling

Rudy Blanco

Novice

Best	'Ave Maria'	Jason Flick
Award of Merit	'Carter's Sunburst'	Kathy Brubaker

Intermediate

Best	'Adolphe Audusson Special'	Walter Noehren
Runner-up	'Adolphe Audusson'	Walter Noehren

*

Editor's note: 'Island Sunset' and 'Coral Bouquet' have been correctly identified in Camellia Nomenclature 2006 as non-reticulata hybrids.



Gardening Rules:

When weeding, the best way to make sure you are removing a weed and not a valuable plant is to pull on it.

If it comes out of the ground easily, it is a valuable plant.

Any self-respecting rock will break at least one shovel before accepting its new home.

SOUTHERN CALIFORNIA CAMELLIA SOCIETY
33rd Annual Show, Huntingdon Gardens
February 11 and 12, 2006

Japonica—Large/Very Large

Best Single	'Royal Velvet'	Dale & Mary Kay Mittag
Runner-up Single	'Easter Morn'	Tom & Dody Gilfoy
Court of Honor Single	'Katie'	Linda Tunner
Best Tray of 3	'Swan Lake'	Tom & Dody Gilfoy
Runner-up Tray of 3	'Dody's Delight'	Tom & Dody Gilfoy
Court of Honor Tray of 3	'Royal Velvet'	Jane Brady
Best Tray of 5	'Katie Variegated'	Dale & Mary Kay Mittag
Runner-up Tray of 5	'Royal Velvet'	Dale & Mary Kay Mittag
Court of Honor Tray of 5	'Lady Laura'	Tom & Dody Gilfoy

Japonica—Medium

Best Single	'Nuccio's Carousel'	Tom & Dody Gilfoy
Runner-up Single	'Desire'	Tom & Dody Gilfoy
Court of Honor Single	'Eleanor Martin Supreme'	Tom & Dody Gilfoy
Best Tray of 3	'Firedance Variegated'	Don & Marilee Gray
Runner-up Tray of 3	'White Deb'	Dale & Mary Kay Mittag
Court of Honor Tray of 3	'Wildfire'	Brad & Lynn King
Best Tray of 5	'Nuccio's Carousel'	Brad & Lynn King
Runner-up Tray of 5	'Margaret Davis'	Dale & Mary Kay Mittag
Court of Honor Tray of 3	'Fire Falls'	Linda Tunner

Japonica—Small

Best Single	'Red Hots'	Marvin & Virginia Belcher
Runner-up Single	'Maroon and Gold'	George & Karen Harrison
Court of Honor Single	'Little Michael'	Tom & Dody Gilfoy

Japonica—Miniature

Best Single	'Trinket'	Tom & Dody Gilfoy
Runner-up Single	'Lemon Drop'	Boris & Kathryn Korin
Court of Honor Single	'Mansize'	Kathy Holmes

Japonica—Small or Miniature

Best Tray of 3	'Red Hots'	Jane Brady
Runner-up Tray of 3	'Hishi-Karaito'	Boris & Kathryn Korin
Court of Honor Tray of 3	'Confetti Blush'	Dale & Mary Kay Mittag
Best Tray of 5	'Tama Peacock'	George & Karen Harrison
Runner-up Tray of 5	'Hishi-Karaito'	George & Karen Harrison
Court of Honor Tray of 5	'Pink Perfection'	Dale & Mary Kay Mittag

Japonica—Pre 1950

Best	'Herme'	Beth Stone
Runner-up	'Elegans Chandler Variegated'	Doris Dermody
Court of Honor	'Lady Clare'	James & Peggy Neiman

Reticulata or Reticulata Hybrid

Best Single	'Ruta Hagmann'	Mel & Bobbie Belcher
Runner-up Single	'Frank Houser'	Marvin & Virginia Belcher
Court of Honor Single	'W. P. Gilley'	Tom & Dody Gilfoy

Best Tray of 3	'Frank Houser'	Tom & Dody Gilfoy
Runner-up Tray of 3	'LASCA Beauty'	Mel & Bobbie Belcher
Court of Honor Tray of 3	'Harold L. Paige'	Les & JoAnn Brewer
Best Tray of 5	'Miss Tulare'	Tom & Dody Gilfoy
Runner-up Tray of 5	'Dr. Clifford Parks'	Mel & Bobbie Belcher
Court of Honor Tray of 5	'Emma Gaeta Var.'	Rudy Blanco

Non-Reticulata Hybrid

Best Single	'Angel Wings'	Tom & Dody Gilfoy
Runner-up Single	'Lucky Star'	Tom & Dody Gilfoy
Court of Honor Single	'Nicky Crisp'	Lucia Marino
Best Tray of 3	'Lucky Star'	Tom & Dody Gilfoy
Runner-up Tray of 3	'Freedom Bell'	George & Karen Harrison
Court of Honor Tray of 3	'Spring Festival'	Steve & Nancy Mefford
Best Tray of 5	'Lucky Star'	Tom & Dody Gilfoy
Runner-up Tray of 5	'Coral Bouquet'	Dale & Mary Kay Mittag
Court of Honor Tray of 5	'Nicky Crisp'	Dale & Mary Kay Mittag

Special Culture

Best Japonica	'Miss Charleston Var.'	Don & Marilee Gray
Runner-up Japonica	'Elegans Splendor'	Don & Marilee Gray
Court of Honor Japonica	'Pink Wings'	Don & Marilee Gray
Best Reticulata	'Arcadia'	Don & Marilee Gray
Runner-up Reticulata	'Linda Carol'	Don & Marilee Gray
Court of Honor Reticulata	'Larry Piet'	Mel & Bobbie Belcher
Best Non-Reticulata Hybrid	'Coral Delight Var.'	Don & Marilee Gray
Runner-up Non-Reticulata	'Jackpot'	Don & Marilee Gray
Court of Honor Reticulata	'Nicky Crisp'	Don & Marilee Gray

Species

Best	'Shibori Egao'	Tom & Dody Gilfoy
Runner-up	'Kanjiro'	Linda Tunner
Court of Honor	'Shiro Karako'	Linda Tunner

Collector's Tray of 3 Mixed Varieties

Best Tray	'Miss Charleston Var.', 'Firedance Var.', 'Marchioness of Salisbury'	Don & Marilee Gray
Runner-up Tray	'Harold L. Paige', 'Candy Apple', 'Red Hots'	Les & JoAnn Brewer
Court of Honor Tray	'Moonrise', 'Berenice Boddy', 'Cupcake'	George & Karen Harrison

Best Seedling

Rudy Blanco

Novice

Best Large/Very Large	'Kramer's Supreme'	Lloyd Hill
Best Med., Small or Min.	'Nuccio's Carousel'	George Erline
Runner-up Med., Small or Min.	'Nuccio's Gem'	George Erline

Intermediate

Best Large/Very Large	'Nuccio's Pink Lace'	Stephen & Anne Dashiell
Runner-up	'Shiro Chan'	Stephen & Anne Dashiell
Best Med., Small or Min.	'Spring Sonnet'	Stephen & Anne Dashiell
Runner-up	'High Fragrance'	Stephen & Anne Dashiell

SOUTHERN CALIFORNIA CAMELLIA COUNCIL SHOW
48th Annual Show, Descanso Gardens
February 25 and 26, 2006

Japonica—Large/Very Large

Best Single	'Royal Velvet'	Jane Brady
Runner-up Single	'Moonlight Bay'	Steve Mefford
Court of Honor Single	'Chandleri Elegans'	Marvin & Virginia Belcher
Best Tray of 3	'Royal Velvet'	Jane Brady
Runner-up Tray of 3	'Kramer's Supreme'	Don & Marilee Gray
Court of Honor Tray of 3	'Mabel Bryan'	Steve Mefford
Best Tray of 5	'Royal Velvet'	Dale & Mary Kay Mittag
Runner-up Tray of 5	'Katie Variegated'	Dale & Mary Kay Mittag
Court of Honor Tray of 5	'C. M. Wilson'	Linda Tunner
Special Culture		
Best	'Miss Charleston Variegated'	Don & Marilee Gray
Runner-up	'Showtime'	Jim Fitzpatrick
Court of Honor	'Tomorrow Park Hill'	Don & Marilee Gray

Japonica—Medium

Best Single	'Ace o' Hearts'	Marvin & Virginia Belcher
Runner-up Single	'Magnoliaeflora'	Doris Dermody
Court of Honor Single	'Black Magic'	Don & Marilee Gray
Best Tray of 3	'Nuccio's Carousel'	Steve Mefford
Runner-up Tray of 3	'Elena Nobile'	Beth Stone'
Court of Honor Tray of 3	'Cloisonne'	Doris Dermody
Best Tray of 5	'Glen 40'	Dale & Mary Kay Mittag
Runner-up Tray of 5	'Elena Nobile'	Beth Stone
Special Culture		
Best	'Grand Marshal'	Jim Fitzpatrick
Runner-up	'Pink Wings'	Don & Marilee Gray
Court of Honor	'Prima Ballerina'	Don & Marilee Gray

Japonica—Small

Best Single	'Red Hots'	Jane Brady
Runner-up Single	'Maroon and Gold'	Les & JoAnn Brewer
Court of Honor Single	'Tama Peacock'	George & Karen Harrison

Japonica—Miniature

Best Single	'Little Michael'	Bob & Mary Sheriff
Runner-up Single	'Something Beautiful'	Tom & Dody Gilfoy
Court of Honor Single	'Man Size'	Dale & Mary Kay Mittag

Japonica—Small or Miniature

Best Tray of 3	'Red Hots'	Jane Brady
Runner-up Tray of 3	'Maroon and Gold'	George & Karen Harrison
Court of Honor Tray of 3	'Hishi-Karaito'	Tom & Dody Gilfoy
Best Tray of 5	'Pink Perfection'	Dale & Mary Kay Mittag

Reticulata or Reticulata Hybrid

Best Single	'Bravo'	Tom & Dody Gilfoy
Runner-up Single	'Bill Woodroof'	Tom & Dody Gilfoy
Court of Honor Single	'Valentine Day Variegated'	Gene Snooks
Best Tray of 3	'Curtain Call'	Brad & Lynn King

Runner-up Tray of 3	'Bev Piet Variegated'	Rudy Blanco
Court of Honor Tray of 3	'Dr. Clifford Parks'	Les & JoAnn Brewer
Best Tray of 5	'Dr. Clifford Parks'	Les & JoAnn Brewer
Runner-up Tray of 5	'Frank Houser'	Brad & Lynn King
Special Culture		
Best Single	'Arcadia'	Don & Marilee Gray
Runner-up Single	'Frank Houser'	Don & Marilee Gray
Court of Honor Single	'Harold L. Paige'	Don & Marilee Gray
Non-Reticulata Hybrid		
Best Single	'Lucky Star'	Jim & Dorothy McQuiston
Runner-up Single	'Spring Daze'	Dale & Mary Kay Mittag
Court of Honor Single	'Island Sunset'	Jane Brady
Best Tray of 3	'Buttons 'n Bows'	Dale & Mary Kay Mittag
Runner-up Tray of 3	'Pink Dahlia'	Les & JoAnn Brewer
Court of Honor Tray of 3	'Nicky Crisp'	
Best Tray of 5	'Lucky Star'	Bob & Mary Sheriff
Runner-up Tray of 5	'E. G. Waterhouse'	Tom & Dody Gilfoy
Court of Honor Tray of 5	'Spring Festival'	Steve Mefford
Special Culture		
Best Single	'Jackpot'	Don & Marilee Gray
Runner-up Single	'Taylor's Perfection'	Jim Fitzpatrick
Collector's Tray of 3 Mixed Varieties		
Best Tray	'Dr. Clifford Parks', 'Cherries Jubilee', 'Little Slam'	Les & JoAnn Brewer
Runner-up Tray	'Han-Ling Snow', 'Miss Universe', 'Man Size'	Don & Marilee Gray
Court of Honor Tray	'Han-Ling Snow', 'Rudy's Magnoliaeiflora', 'Spring Daze'	Les & JoAnn Brewer
Best Fragrant		
Best Seedling		
	'High Fragrance'	Doris Dermody Rudy Blanco
Novice		
Best Large/Very Large	'Katie'	Bob Woodburn
Best Medium Bloom	'Nuccio's Gem'	Bob Woodburn
Best Small/Miniature Bloom	'Red Hots'	Tom Learch
Intermediate		
Best Large/Very Large	'Shiro Chan'	Steve & Anne Dashiell
Runner-up Large/Very Large	'Nuccio's Pink Lace'	Steve & Anne Dashiell
Best Med. Small or Min.	'Nuccio's Gem'	Steve & Anne Dashiell
Runner-up Med. Small or Min.	'Spring Sonnet'	Steve & Anne Dashiell
Court of Honor	'Firefalls'	Steve & Anne Dashiell



Gardening requires a lot of water—
most of it in the form of perspiration.

Knowledge is knowing a tomato is a fruit;
Wisdom is not putting it in a fruit salad.

CAMELLIA SOCIETY OF KERN COUNTY

57th Annual Show
March 4 and 5, 2006

Japonica—Large/Very Large

Best Single	'Grand Prix'	George Priest
Runner-up Single	'Swan Lake'	Tom & Dody Gilfoy
Court of Honor Single	'Elegans Champagne'	Mel & Bobbie Belcher
Best Tray of 3	'Mrs. D. W. Davis'	Victor Shull
Runner-up Tray of 3	'Royal Velvet'	Helen Maas
Court of Honor Tray of 3	'Miss Charleston Variegated'	Don & Marilee Gray

Japonica—Medium

Best Single	'Firedance Variegated'	Joe Roup
Runner-up Single	'Ragland Supreme'	Doris Dermody
Court of Honor Single	'Silver Chalice'	P L. Harrison
Best Tray of 3	'Ragland Supreme'	Doris Dermody
Runner-up Tray of 3	'Firefalls'	Linda Tunner
Court of Honor Tray of 3	'Wildfire'	Doris Dermody

Japonica—Small

Best Single	'Irene'	Mel & Bobbie Belcher
Runner-up Single	'Red Hots'	Jane Brady
Court of Honor Single	'Hishi-Karaito'	Don & Marilee Gray
Best Tray of 3	'Red Hots'	Jane Brady
Runner-up Tray of 3	'Covina'	Jodie DeMarsh

Japonica—Miniature

Best Single	'Something Beautiful'	Joe Roup
Runner-up Single	'Trinket'	Don & Marilee Gray
Court of Honor Single	'Man Size'	Mel & Bobbie Belcher
Best Tray of 3	'Grace Albritton'	Julius & Dorothy Christinson
Runner-up Tray of 3	'Man Size'	Julius & Dorothy Christinson

Reticulata or Reticulata Hybrid

Best Single	'Valley Knudsen'	Joe Roup
Runner-up Single	'Ruta Hagmann'	Mel & Bobbie Belcher
Court of Honor Single	'May Westbrook'	Mel & Bobbie Belcher
Best Tray of 3	'Queen Bee'	Don & Marilee Gray
Runner-up Tray of 3	'Bravo'	Marvin & Virginia Belcher
Court of Honor Tray of 3	'Harold L. Paige'	Don & Marilee Gray

Non-Reticulata Hybrid

Best Single	'Elsie Jury'	Joe Roup
Runner-up Single	'Island Sunset'	Joe Roup
Court of Honor Single	'Nicky Crisp'	Don & Marilee Gray
Best Tray of 3	'Nicky Crisp'	Don & Marilee Gray
Runner-up Tray of 3	'Kramer's Fluted Coral'	Mel & Bobbie Belcher
Court of Honor Tray of 3	'Blue Bird'	Tom & Dody Gilfoy

Species

Best	'Botan Yuki'	Joe Roup
Runner-up	'Himekoki'	Jane Brady

Special Culture

Best Single	'Arcadia'	Don & Marilee Gray
Runner-up Single	'Junior Prom'	Joe Roup
Court of Honor Single	'Queen Bee'	Don & Marilee Gray

Collector's Tray of 3 Mixed Varieties

Best Tray	'Mouchang', 'Nuccio's Jewel', 'Pink Perfection'	Helen Maas
Runner-up Tray	'Han-Ling Snow', 'Silver Towers', 'Man Size'	Don & Marilee Gray
Court of Honor Tray	'Dr. Clifford Parks', 'Tom Knudsen', 'Red Hots'	Don & Marilee Gray

Novice

Large/Very Large Single		
Best	'Mrs. D. W. Davis'	Victor Stull
Runner-up	'Mathotiana'	Beverly Wade
Court of Honor	'Silver Anniversary'	Joy Smith
Medium Single		
Best	'Herme'	Victor Stull
Runner-up	'Haru No Utena'	Joy Smith
Court of Honor	'Gen. George Patton'	Marian Vargas

Best Novice Flower	'Mrs. D. W. Davis'	Victor Stull
---------------------------	--------------------	--------------

•••••

PACIFIC CAMELLIA SOCIETY
3rd Annual Mini Show
March 18 and 19, 2006

Japonica—Large/Very Large

Best Single	'Royal Velvet'	Dale & Mary Kay Mittag
Runner-up Single	'Moonlight Bay'	Tom & Dody Gilfoy
Court of Honor Single	'Holly Bright'	Les & JoAnn Brewer
Best Tray of 3	'Holly Bright'	Les & JoAnn Brewer
Runner-up Tray of 3	'Han-Ling Snow'	Les & JoAnn Brewer
Court of Honor Tray of 3	'Katie Variegated'	Dale & Mary Kay Mittag

Japonica—Medium

Best Single	'Nuccio's Jewel'	Dale & Mary Kay Mittag
Runner-up Single	'Hawaii'	Dale & Mary Kay Mittag
Court of Honor Single	'Black Magic'	Don & Marilee Gray
Best Tray of 3	'Nuccio's Jewel'	Dale & Mary Kay Mittag
Runner-up Tray of 3	'Glen 40'	Dale & Mary Kay Mittag
Court of Honor Tray of 3	'Debutante'	James & Peggy Neiman

Japonica—Miniature or Small

Best Single	'Red Hots'	Don & Marilee Gray
Runner-up Single	'Maroon and Gold'	George & Karen Harrison
Court of Honor Single	'Lemon Drop'	Boris & Kathryn Korin
Best Tray of 3	'Pink Perfection'	Dale & Mary Kay Mittag
Runner-up Tray of 3	'Hishi-Karaito'	Gene Snooks

Court of Honor Tray of 3	'Lemon Drop'	Bob & Mary Sheriff
Reticulata or Reticulata Hybrid		
Best Single	'Queen Bee'	Don & Marilee Gray
Runner-up Single	'Arcadia'	Don & Marilee Gray
Court of Honor Single	'Emma Gaeta Variegated'	Don & Marilee Gray
Best Tray of 3	'Bev Piet Variegated'	Rudy Blanco
Runner-up Tray of 3	'Arcadia'	Don & Marilee Gray
Court of Honor Tray of 3	'Bev Piet'	Rudy Blanco

Non-Reticulata Hybrid

Best Single	'Lucky Star'	Tom & Dody Gilfoy
Runner-up Single	'Lucky Star Variegated'	Dale & Mary Kay Mittag
Court of Honor Single	'Island Sunset'	George & Karen Harrison
Best Tray of 3	'Lucky Star'	Bob & Mary Sheriff
Runner-up Tray of 3	'Pink Dahlia'	Les & JoAnn Brewer
Court of Honor Tray of 3	'E. G. Waterhouse'	Tom & Dody Gilfoy

Novice

Best Single	'Hishi-Karaito'	John Buckner
-------------	-----------------	--------------

**INDEX OF CAMELLIA REVIEW
Volume 67—September 2005 to June 2006**

Camellia Judges Have Spoken in 2005, Don Bergamini	1/4
Camellia Rama 2005, Art Gonos	1/5
New Camellias from Nuccio's Nursery, Bradford King	1/7
How to Have Camellias in the Metroplex, Ray Bond	1/8
The Love of Camellias, Monique I. Peer	1/10
Ideas on Camellia Seed and Seedlings, Eugene H. Gehry, M.D.	1/12
Humidity and Hormones, Frank F. Reed	1/13
Higo Camellias, Bradford King	1/16
How to Use Camellias in the Landscape, Ray Bond	1/17
An Astounding Revelation, Dr. Frederick G. Meuyer and Mr. Joaquin Moreira Da Silva	1/19
Santa Clara County Show Results	1/22
Growing Camellias in Pots, Dianne and Peter Chilvers	1/23
Memories of Toichi Domoto, Julius Nuccio	2/6
For Sweetness and Charm, Plant Sasanquas, Roma Coolidge Mulvihill	2/8
Espalier Training of Camellias, David Cook	2/9
Sick Bay, Bradford King	2/12
The Camellia Bug, John H. Clairmont	2/14
Lazy Man's Perfect Hobby—The Camellia	2/15
Memories of Camellia-Rama 2005	2/16
Questions and "Howevers" About Camellias, Ray Bond	2/20
Camellia Care—January to April, Ray Bond	2/22
Winter-Tolerant Camellias, Ray Bond	2/27
Camellia Care May Through August, Ray Bond	3/3
Gibberelin—A Real Problem, David L. Feathers	3/8
Bob Ehart Speaks to Joint Meeting	3/10
Creating a New Camellia Garden, Bradford King	3/12

It's An Ill Wind That Blows No Man Good, Bradford King	3/13
Show Results	
Pacific Camellia Society	3/14
Orange County Camellia Society	3/16
Southern California Camellia Society, Descanso	3/18
San Diego Camellia Society	3/21
Pomona Valley Camellia Society	3/22
Southern California Camellia Society, Huntington	3/25
Southern California Camellia Council	3/27
Camellia Society of Kern County	3/29
Pacific Camellia Society "Mini Show"	3/30



AUTHORS

Bergamini, Don	1/3
Bond, Ray	1/8, 17; 2/20, 22, 27; 3/3
Chilvers, Dianne and Peter	1/23
Clairmont, John H.	2/1
Cook, David	2/9
Feathers, David	3/6
Gehry, Eugene H.	1/12
Gonos, Art	1/6
King, Bradford	1/7, 16; 2/12; 3/12, 13
Mayer, Dr. Frederick and DaSilva, Joaquin Moreira	1/21
Mulvihill, Roma Coolidge	2/8
Nuccio, Julius	2/6
Peer, Monique L.	1/10
Reed Frank F.	1/13



People are like Potatoes!

Some people never seem motivated to participate but are content to watch others—They are called "Speck Tators."

Some are always looking to cause problems and really get under your skin so we called them "Aggi Tators."

There are those who are always saying they will but somehow they never get around to doing. We call them "Hezzi Tators"

Some folks spend a lot of time sitting and peering into their gardens and they are called "Medi Tators."

DIRECTORY OF CALIFORNIA CAMELLIA SOCIETIES

ATWATER GARDEN CLUB & CAMELLIA SOCIETY; President—Sherry Miller; Secretary—Pam Jambor, PO Box 918, Atwater, CA 95301, Meetings 3rd Tuesday, September-June, 6:30 p.m. St. Nicholas Episcopal Church, 1635 Shaffer Road, Atwater.

CENTRAL CALIFORNIA CAMELLIA SOCIETY: President—Art Gonos; Secretary—Joan Hill, 37341 Ave 17 1/2, Madera, 93638. Meetings: 3rd Wednesday, November-February, 7:30 p.m. Sheraton Smuggler's Inn, 3737 N. Blackstone, Fresno.

KERN COUNTY, CAMELLIA SOCIETY OF: President—Helen Maas; Secretary—Cari McNeill, 5844 Riggs Court, Bakersfield 93306 For meeting dates and times, call Helen Maas (661)872-2188.

MODESTO, CAMELLIA SOCIETY OF: President—Don Kendall; Secretary—Sue Kendall, 1505 Gary Lane, Modesto, 95355. Meetings: 1st Sunday, October-April, 1:00 p.m., 220-A Standiford Avenue, Modesto.

NORTHERN CALIFORNIA CAMELLIA SOCIETY: President—Mary Bergamini; Secretary—Don Bergamini, 2023 Huntridge Court, Martinez 94553 Meetings: 1st Monday, November-April, 7:30 p.m., Oak Grove School, 2050 Minert Road, Concord. Final meeting in May is a dinner meeting.

ORANGE COUNTY CAMELLIA SOCIETY: President—Steve Mefford; Secretary—Bob Sheriff, 27333 Paseo Laguna, San Juan Capistrano 92675. Meetings: 1st Monday, October-April, 7:00 p.m. Dept. of Education Building, 200 Kalmus, Costa Mesa

PACIFIC CAMELLIA SOCIETY: President—George Harrison. Secretary—Dorothy McQuiston, 6212 Yucca Street, Los Angeles 909028. Meetings: 1st Thursday, November-April, 7:30 p.m., Descanso Gardens, 1418 Descanso Drive, La Canada.

POMONA VALLEY CAMELLIA SOCIETY: President—David Trujillo; Secretary—Dorothy Christinson, 3751 Hoover St., Riverside 95204. Meetings: 2nd Thursday, November-April, 7:30 p.m., La Verne Community Center, "D" Street, La Verne.

SACRAMENTO, CAMELLIA SOCIETY OF: President—Jackie Randall; Secretary—Gary Schanz, 1177 Cavanaugh Way, Sacramento 95822. Meetings: 4th Tuesday, October-April, 7:30 p.m., Studio Theater, 1028 "R" Street, Sacramento

SAN DIEGO CAMELLIA SOCIETY: President—Gene Snooks; Secretary—Lew Gary, 11419 Cabela Place, San Diego 92127. Meetings: 3rd Wednesday, November-April, 7:30 p.m., Room 101 Casa del Prado, Balboa Park, San Diego.

SAN FRANCISCO PENINSULA CAMELLIA SOCIETY: President—Denise Kupperman. Secretary—Christina Isenberg, SFPCS, PO Box 2103, Menlo Park, CA 92026-2103. Meetings: 3rd or 4th Monday, October-March, Elizabeth Gamble Garden, 1431 Waverly St., Palo Alto (elevator available), Redwoode City. (formerly Peninsula Camellia Society.

SANTA CLARA COUNTY, INC., CAMELLIA SOCIETY OF: President—Kathleen Hall, 1085 Tasman Drive #13, Sunnyvale 94089. Meetings: 3rd Wednesday, October-April, 7:30 p.m., Lick Mill Park, 4750 Lick Mill Boulevard, Santa Clara.

SOUTHERN CALIFORNIA CAMELLIA SOCIETY: President—Brad King; Secretary—Bobbie Belcher, 40641 Via Amapola, Murrieta, CA 92562. Meetings: 7:30 p.m., Ayres Hall, Los Angeles County Arboretum, 301 Baldwin Avenue, Arcadia. Call Marilee Gray to verify meeting dates (909) 624-4107.



Your friends will enjoy receiving your greetings on these camellia note cards. They also make great gifts for your fellow camellia lovers or for those you are trying to get involved in this wonderful hobby! Cards and matching envelopes are packaged in sets of 8.

Order Today!

